

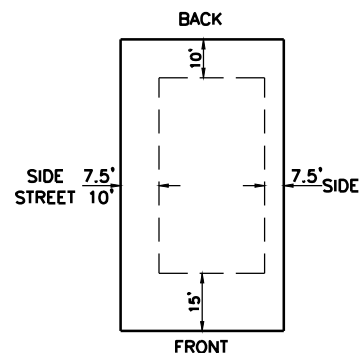
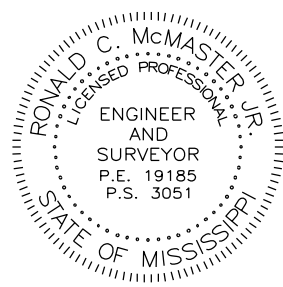
CORNERSTONE

SITUATED IN THE SW 1/4 OF SECTION 18 &
THE NW 1/4 OF SECTION 19, T8N-R2E,
MADISON COUNTY, MISSISSIPPI

FOR REVIEW

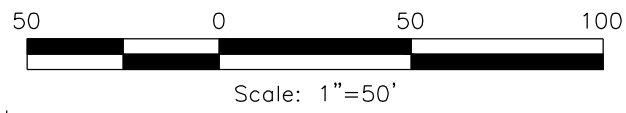
Class "B" Survey
Bearings Based on Survey
Grade GPS Observations
Taken September 7, 2018
(Geodetic North)

- Our Job No. M-2638 Final Plat
- Date - September 19, 2019
- Iron Pin Set (1/2"x18" Iron Rebar)
- Easement Boundary
- Concrete Monument
- SEE PLAT Minimum Finished Floor Elevation
- ENTERGY EASEMENT (Overhead Electrical Service)



TYPICAL SETBACK LOT DETAIL

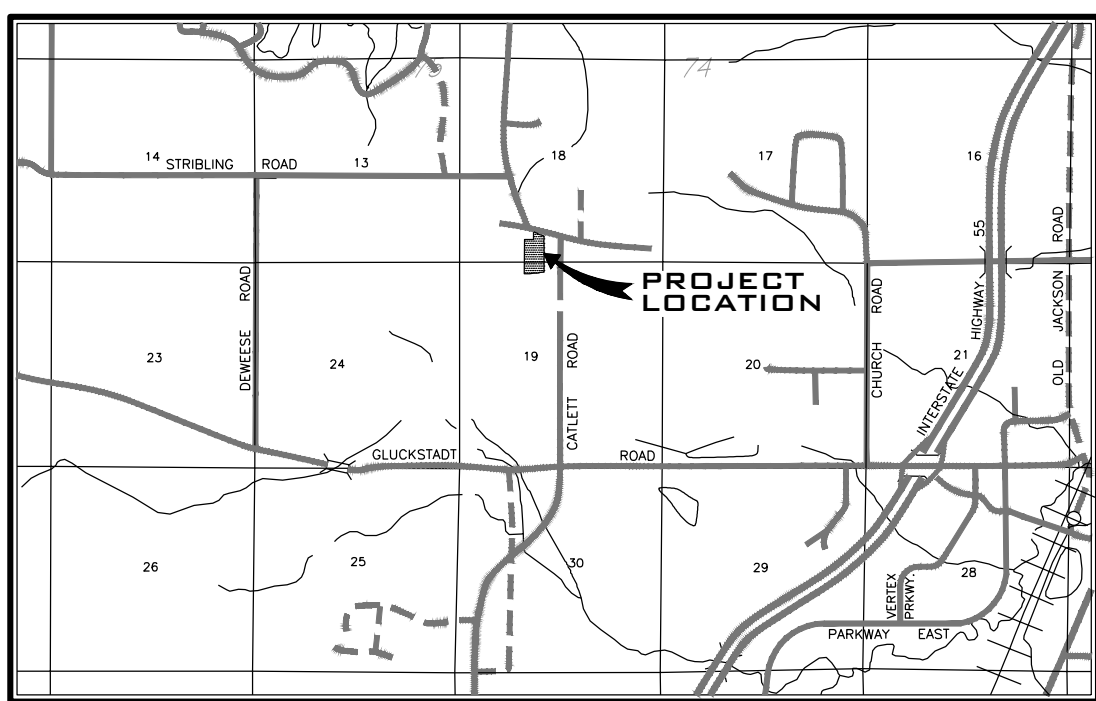
PH. NO.	TOP NUT ELEV.
PH 1	XXX.XX'
PH 2	XXX.XX'
PH 3	XXX.XX'
PH 4	XXX.XX'
PH 5	XXX.XX'



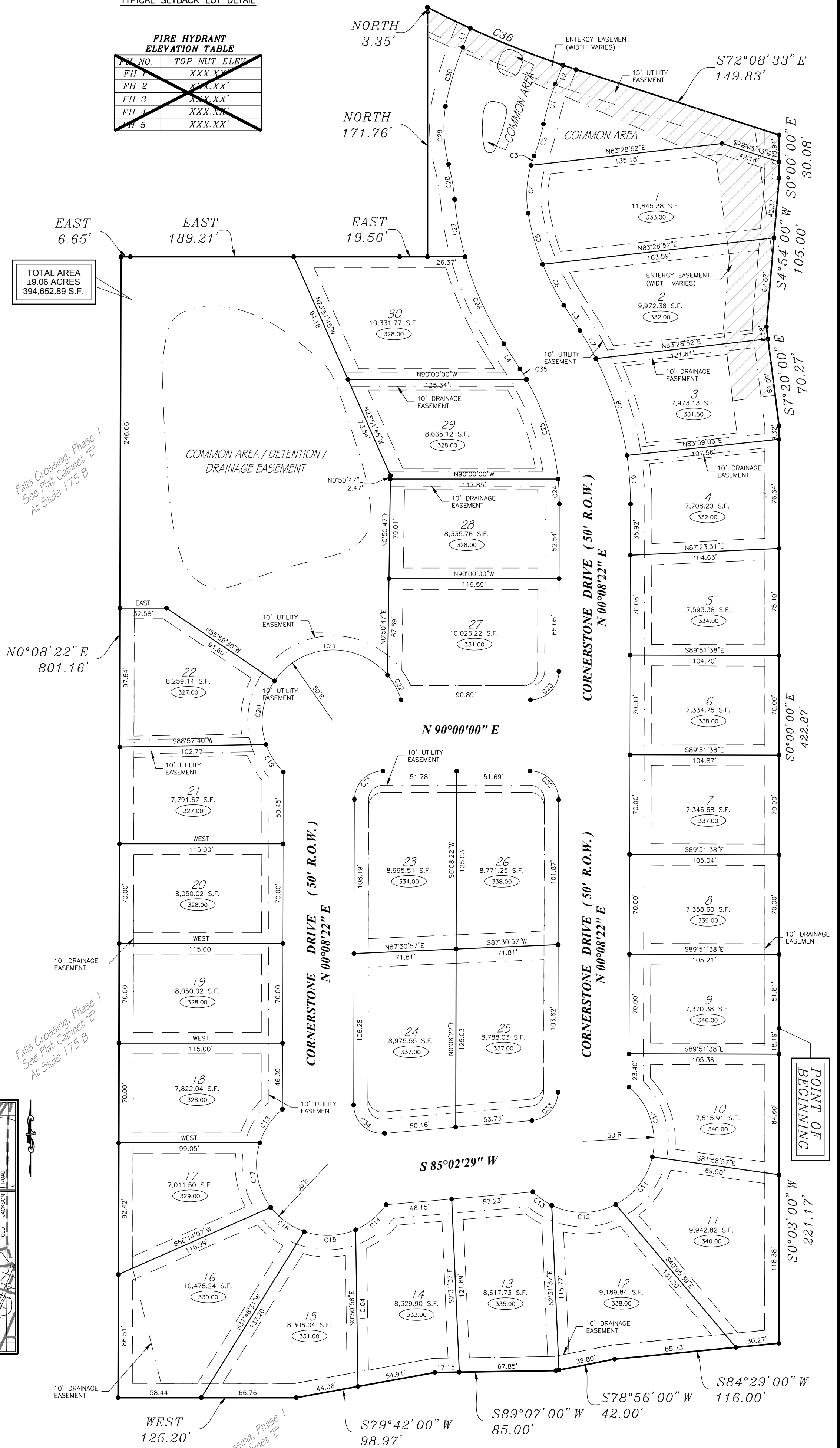
Note:
Random Traverse Closure Precision For This Survey Meets
or Exceeds the Minimum Standards For a Class "B" Survey.

Curve #	Length	Radius	Chord Direction	Chord Length
C1	29.31	165.00	S16° 35' 37"W	29.27
C2	23.27	129.73	N16° 28' 16"E	23.24
C3	7.07	75.00	S18° 54' 33"W	7.07
C4	34.03	75.00	S3° 12' 41"W	33.74
C5	37.32	175.00	S15° 53' 41"E	37.25
C6	32.44	175.00	S27° 18' 50"E	32.39
C7	22.66	225.00	N29° 44' 21"W	22.65
C8	71.66	225.00	N17° 43' 48"W	71.36
C9	34.34	225.00	N4° 13' 59"W	34.31
C10	54.18	50.00	N18° 27' 37"W	51.57
C11	43.57	50.00	N37° 32' 36"E	42.20
C12	46.68	50.00	N89° 14' 55"E	45.00
C13	16.31	50.00	S54° 39' 45"E	16.24
C14	28.14	50.00	N50° 35' 02"E	27.77
C15	37.03	50.00	N87° 55' 22"E	36.19
C16	29.44	50.00	S53° 59' 38"E	29.02
C17	47.73	50.00	S9° 46' 36"E	45.94
C18	28.93	50.00	S34° 08' 47"W	28.52
C19	23.07	50.00	S32° 15' 07"E	22.87
C20	46.61	50.00	S7° 40' 23"W	44.94
C21	91.94	50.00	S87° 03' 25"W	79.53
C22	19.90	50.00	N28° 51' 38"W	19.77
C23	31.37	20.00	N45° 04' 11"E	28.25
C24	17.48	175.00	N2° 43' 21"W	17.48
C25	74.03	175.00	N17° 42' 13"W	73.48
C26	67.15	225.00	S24° 04' 28"E	66.90
C27	40.94	225.20	S10° 18' 43"E	40.89
C28	25.18	150.00	N9° 54' 29"W	25.15
C29	40.93	100.23	S3° 01' 08"E	40.65
C30	43.27	235.00	S16° 24' 25"W	43.21
C31	31.37	20.00	S45° 04' 11"W	28.25
C32	31.46	20.00	N44° 55' 49"W	28.32
C33	29.64	20.00	N42° 35' 25"E	27.00
C34	33.20	20.00	S47° 24' 35"E	29.51
C35	8.56	175.00	N31° 13' 24"W	8.56
C36	113.35	671.62	S67° 18' 27"E	113.22

Line #	Length	Direction
L1	14.34	N21°40'55"E
L2	14.34	S21°40'55"W
L3	21.06	S32°37'26"E
L4	21.06	N32°37'26"W



VICINITY MAP
SCALE: N.T.S.



TOTAL AREA
±9.06 ACRES
394,652.89 S.F.

Falls Crossing, Phase 1
See Plat Cabinet "E"
At Slide 175 B

Falls Crossing, Phase 1
See Plat Cabinet "E"
At Slide 175 B

Falls Crossing, Phase 1
See Plat Cabinet "E"
At Slide 175 B

POINT OF
BEGINNING



212 WATERFORD SQUARE
SUITE 300
MADISON, MS 39110
601.605.1090